



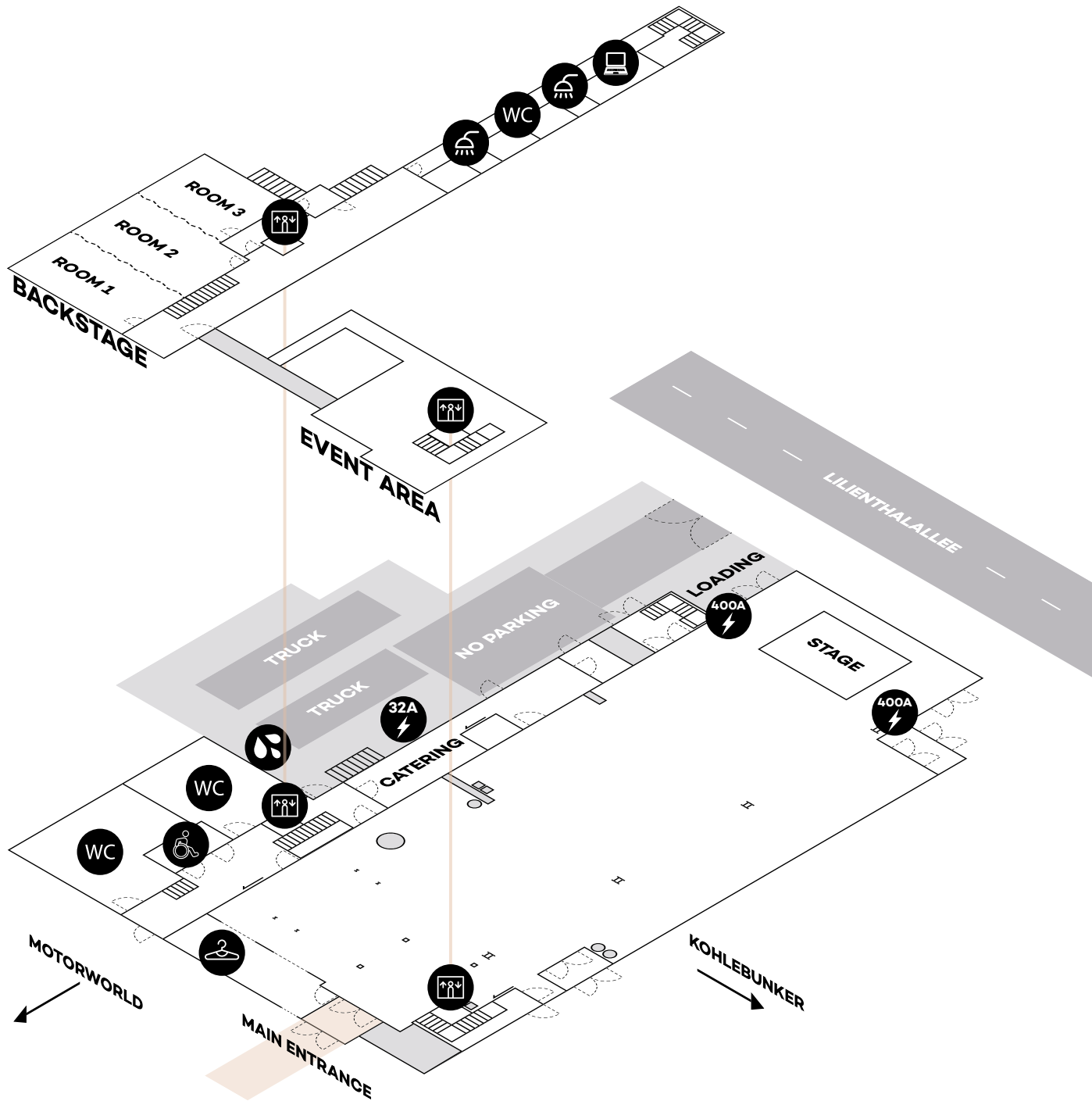
Kesselhaus

Factsheet

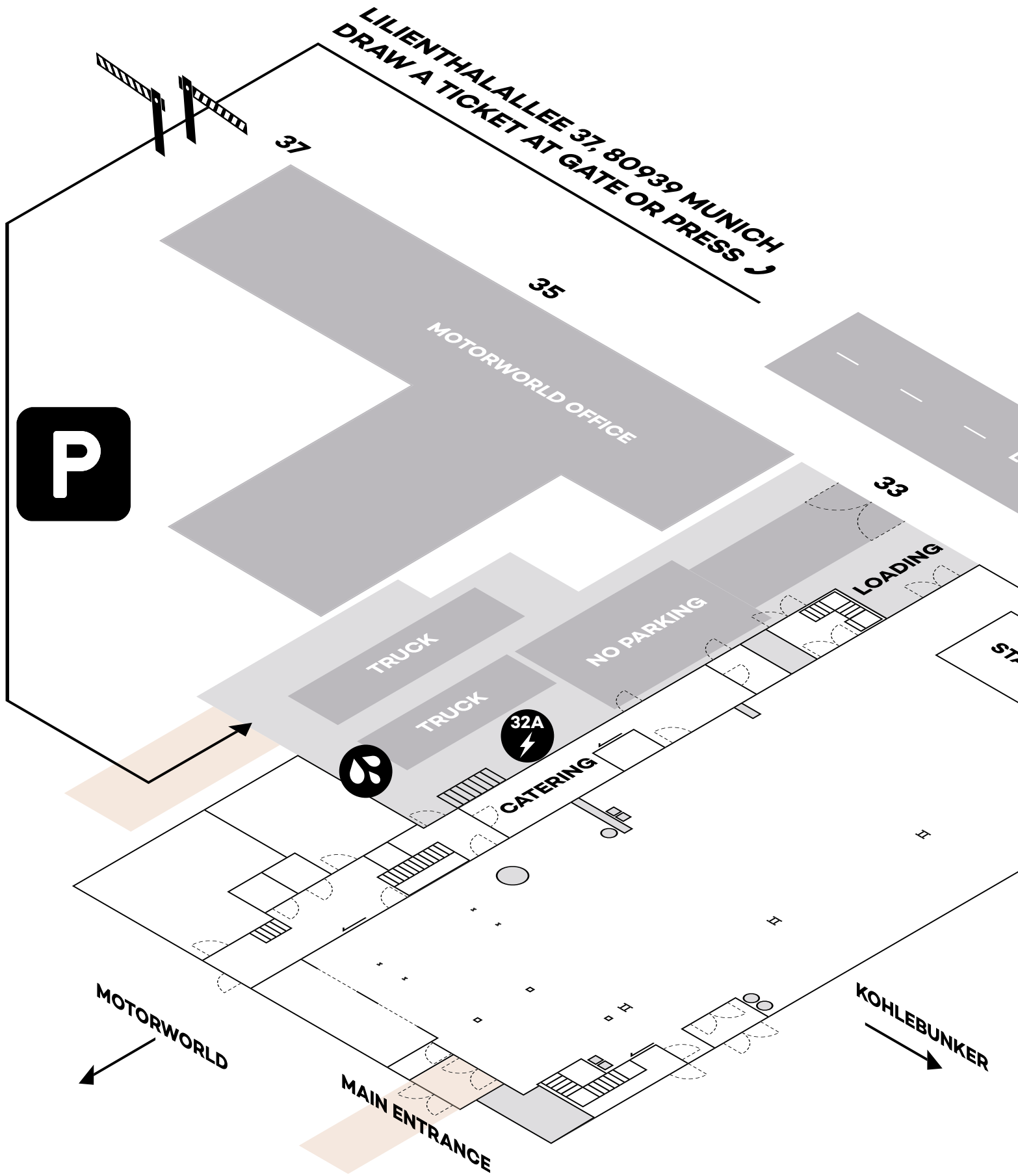
The Kesselhaus

**The location that your
guests will never forget**

The prestigious Kesselhaus was lovingly and elaborately converted into an event venue in 2007. Since then it has enjoyed great popularity – events, functions, corporate celebrations, as well as nationally and internationally renowned artists, bring back long-spent energy. After a further 15-month-long transformation phase, the Kesselhaus now shines in new splendour – better than ever.



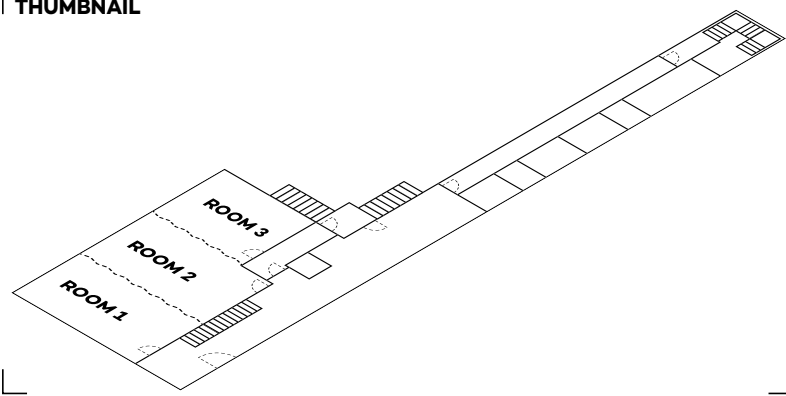
Directions



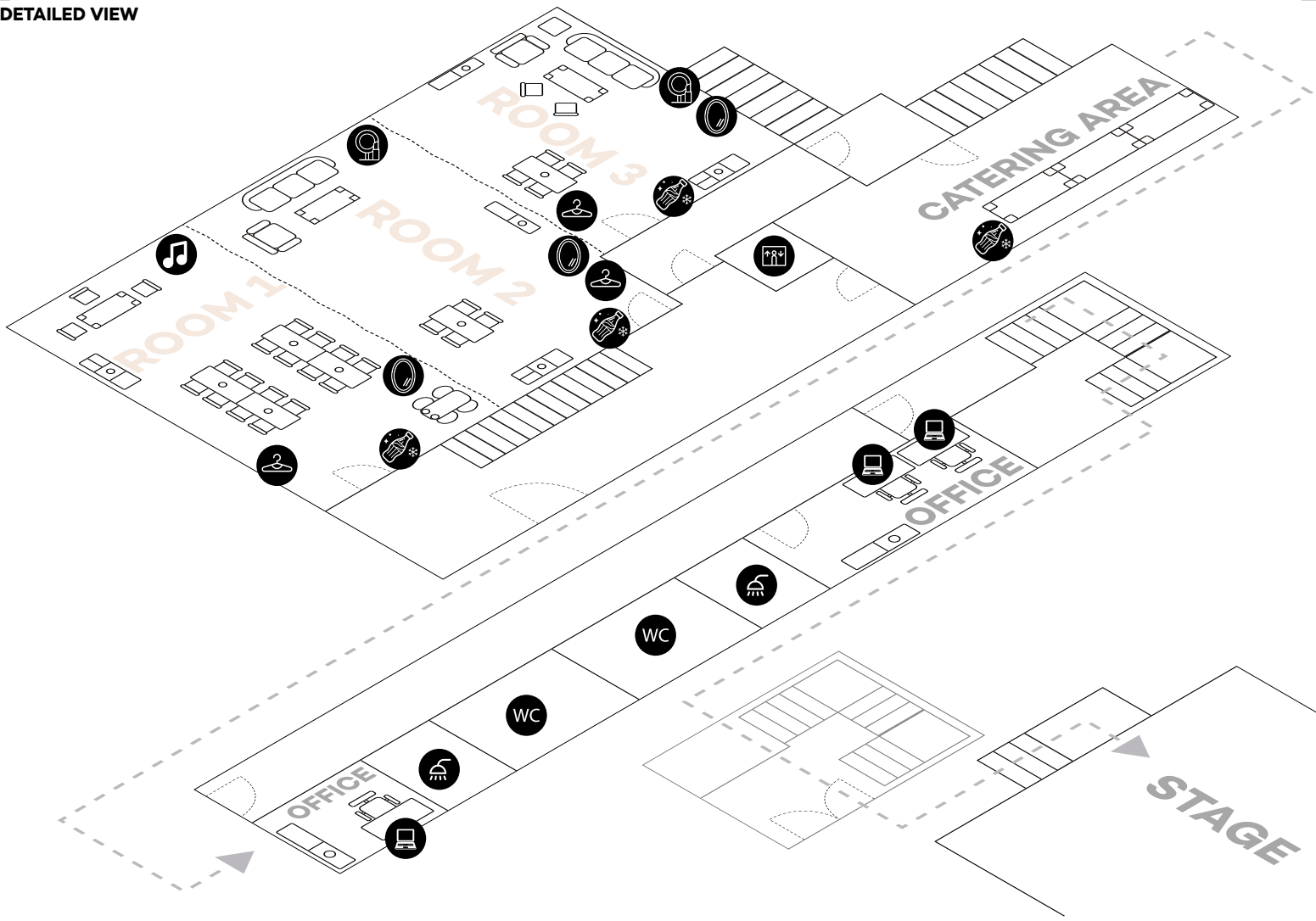
Backstage

ROLL OVER TEXT
TO TAKE A LOOK

THUMBNAIL



DETAILED VIEW



Seperate catering area and kitchen
Three multifunctional rooms
Two small offices

Dimmable lighting
Hot water
Jukebox

Facts

Capacities & Rooms



Total

 Standing 1,800	 Seated 830	Size in m² 1,300
--	--	---------------------------------------

Event Hall

 Standing 1,600	 Seated 740	 Table 550	 Gala 420	Size in m² 950	Usable Height 10 m
--	--	---	--	-------------------------------------	------------------------------

Gallery

 Standing 200	 Seated 90	Size in m² 100
--	---	-------------------------------------

Backstage & Crew Upper Floor

Multifunction Rooms 134 m ² (1 - 3 Räume) Raum 1: 52 m ² Raum 2: 42 m ² Raum 3: 40 m ²	Lobby 31 m ²	Office 11 m ²	Size in m² 250	Lavatories 2x Women 2x Men Showers 1x Women 1x Men
---	-----------------------------------	------------------------------------	-------------------------------------	---

Kitchen incl. Dishwashing Area

Cold Storage 5 m ²	Refuse Room 8 m ²	Door Widhts 1,0 m - 1,1 m	Size in m² 49	Passage to Dishwashing Area 0,85 m wide
---	--	-------------------------------------	------------------------------------	---

Furnishings

Catering Area

Power Connections 2x 32A 9x 16A 8x 230V	Work Tables (mobile) 4x - 1,4 m 1x - 1,0 m 1x - 0,8 m	Extractor Hood Yes
Dishwashing Area 1x feed-through dishwasher 1x front-loading glasswasher	Upright Freezer 570 l	Grease Separator Yes

Bühne

Standard Setup 8 m x 4 m x 0,6 m (W x D x H)	Stage Heights 0,4 m 0,6 m 0,8 m 1,0 m 1,2 m 1,4 m	Fabric Coverings 0,6 m 0,8 m 1,4 m	Steps 3x - 1 m wide	Handrails Available
---	--	--	-------------------------------	-------------------------------

Cloakroom

Size in m² 38	Access Doors (2x) 2,80 m x 2,25 m (WxH)	Coat Racks & Hangers Space for 1.100 jackets and 50 bags	Cloakroom Counters not included
------------------------------------	---	---	---

Bar Counters

Bar Counters (24x) 1,2 m x 0,9 m x 0,6 (LxHxD), incl. LED	Bar Corners (5x) 45° Corners, incl. LED	Prep Tables (8x) 1,2 m x 0,9 m x 0,8 m (LxHxD)	Accessories RGBW Lighting, Electricity, Ice Tubs
--	---	---	---

Preferred Partner

CATERING	TECHNICAL SERVICE	FURNITURE	FLORISTRY
You can book equipment, technical systems, catering (including crew catering) and floristry through our Preferred Partners. You can find a list of our partners here: https://motorworld.de/muenchen/preferred-partner/			
By prior arrangement, you can also engage third-party service providers for your event instead of our Preferred Partners. In such cases we charge a flat rate in the amount of 12% of the net services provided by the third party within the scope of the event, which must be verified by submitting their invoice. Deviating service fee for food trucks: 20% of net sales.			

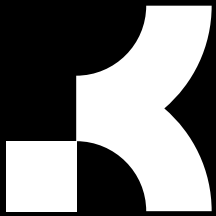
Technical Equipment

You can request and book the following technical packages from our technical partner TAPS Media.

<p>AMBIENT LIGHT</p>	<p>58x Lightcraft LED Spot 30x ELP-60-RGB-Stick 36x PAR 64-500W NSP 45x LED-SMD-Bar 14x Q-Spot LE 8x GLP RZ120 LED 30x RGB-LED-Stick 30x LED-Spots</p>
<p>KESSEL AREA LIGHT Moving Lights incl. Rigging</p>	<p>6x Moving Light Profile MAC Viper Performance 8x Moving Light LED Wash GLP Impression X4 4x LED Wash Light Strobe Cameo W600SMD-RGB Controller GrandMA3 onPC 10m x 8m truss square at 4x 500kg D8+ motorised chain hoist incl. load cells</p>
<p>KESSEL AREA SOUND PA Sound System</p>	<p>Seeburg Acoustic Line 8x TKE212 HiMid Full-Hornloadet 4x TKE212 2x TSM15 2x B18 Sub-Bass System</p>
<p>MAIN AREA LIGHT Moving Lights incl. Rigging</p>	<p>14x Moving Light Profile MAC Viper Performance 10x Moving Light LED Wash GLP Impression X4 4x LED Wash Light Strobe Cameo W600SMD-RGB Controller GrandMA3 onPC 12m x 10m truss square at 4x 500kg D8+ motorised chain hoist incl. load cells 15m F44 truss square at 2x 250kg D8+ motorised chain hoist incl. load cells 10m truss square at 2x 250kg D8+ motorised chain hoist incl. load cells</p>
<p>STAGE AREA LIGHT AND SOUND Moving Lights incl. Rigging PA Soundsystem</p>	<p>14x Moving Light Profile Martin MAC Viper XIP 12x Moving Light Wash GLP Impression X5 8x Strobe Martin Atomic 3000 LED 4x Showtec Stage Blinder 4 1x Hazer Cameo Touring LineArray Coda Audio 12xViRAY 3-way Line-Array 4xSC2F Sub 3x 12m F44 truss square at 2x 250kg D8+ motorised chain hoist incl. load cells</p>
<p>Electricity Plan</p>	<p>Available power capacity 554 KW incl. various distributors, Electricity Plan</p>
<p>Light and Load Plan</p>	<p>Light and Load Plan</p>
<p>Further equipment</p>	<p>Can be booked on request through our Preferred Partners here</p>

Miscellaneous

Floor Plans	PDF and DWG can be downloaded here Event hall can be divided into two areas with a curtain
Stage	95 m ² stage 750kg / m ² Standard Setup 8 m x 4 m x 0,6 m (WxDxH) Incl. steps, handrails and fabric coverings Prices for dismantling and converting on request
Forklift	Electrical forklift with 3t load capacity, further specifications on request
Articulated Boom Lift	Lifting height 11,5 m, further specifications on request
Vehicle Access	max. 7,5t
Parking	Available for trucks / buses and cars, reservations possible on request
Loading Route	Loading possible at ground level via loading door and courtyard door
Main Entrance	2,56 m x 2,70 m (WxH)
Loading Gate	2,35 m x 3,30 m (WxH) with direct access to the stage
Inner Courtyard Door	2,70 m x 2,26 m (WxH)
Passenger Lift	Door measurements 0,9 m x 2,1 m x 2,1 m (WxDxH)
Service Lift	Door measurements 0,9 m x 2,1 m x 2,1 m (WxDxH)
Network	Wi-Fi 300 Mbit/s download & upload Further requirements on request
Changing Rooms	Two rooms, incl. lockers
Building Services	Heating, ventilation, cooling
Wall Curtains	Hall light grey, stage area black or light grey
Advertising Spaces	An overview can be sent on request



Contact details

Kesselhaus
Lilienthalallee 33
80939 Munich

MW München Betriebs GmbH
Lilienthalallee 35
80939 München

Registered office:
Ferdinand-Düinkel-Str. 5,
D-88433 Schemmerhofen

Managing Directors:
Felix Oberle, Sebastian Olsowski

Viewings & Enquiries

events-muenchen@motorworld.de
kesselhaus-muc.de/en/contact